

**GBA12  
ST12-  
P10**



**ACCESSORIES – USEFUL HELPERS ABOUT  
THE ELTAKO INSTALLATION**

# Accessories wireless and others

Blisterpack dimming <a href="#">BPD</a> and blisterpack switching <a href="#">BPS</a>	Z-2
Blisterpack dimming <a href="#">BPD55</a> and blisterpack switching <a href="#">BPS55</a>	Z-3
Blisterpack shading <a href="#">BPB</a> and <a href="#">BPB55</a>	Z-4
Set of jumpers <a href="#">STS14</a>	Z-5
WET.PROTECT <a href="#">WP50</a>	Z-5
Wireless Powernet phase coupler <a href="#">FPP12</a>	Z-5
Wireless MP3 player <a href="#">FMP3</a>	Z-6
EnOcean KNX gateways <a href="#">KNX ENO</a>	Z-7
EnOcean Field Test Tool <a href="#">P10</a>	Z-8
Wireless pushbutton inserts with EnOcean energy generators <a href="#">FTE...</a>	Z-8
Wireless repeater <a href="#">FRP61-230V</a> and wireless socket repeater <a href="#">FSRP-230V</a>	Z-9
Wireless repeater <a href="#">FRP70-230V</a> and <a href="#">FRP65/230V-wg</a>	Z-10
Outdoor wireless repeater <a href="#">FARP60-230V</a>	Z-11
Wireless transmitter module <a href="#">FSM60B</a> with batteries	Z-12
Wireless outdoor transmitter module <a href="#">FASM60-UC</a>	Z-12
Wireless antennas <a href="#">FA250</a> , <a href="#">FHM175</a> and <a href="#">FA200</a>	Z-13
Wireless antenna <a href="#">FAG65-wg</a> , surface cap <a href="#">K81</a> , spacer <a href="#">DS12</a> and socket outlet <a href="#">ST12-16A</a>	Z-14
Sealing cap <a href="#">PK18</a> , screws <a href="#">S</a> + rawls <a href="#">D</a> , triple RC module <a href="#">RC12-230V</a> and housings for operating instructions <a href="#">GBA12</a> and <a href="#">GBA14</a>	Z-15



## BPD

**Blisterpack dimming with wireless pushbutton F2T65 and universal dimmer switch FUD61NPN-230V. Smart Home sensor and Smart Home actuator.**

**F2T65:** Wireless pushbutton pure white glossy for single mounting 84 x 84 x 16 mm or mounting into the E-Design65 switching system. Generates the power for wireless telegrams itself when the button is pressed, therefore there is no connecting wire and no standby loss.

Wireless pushbuttons with one rocker can transmit two evaluable signals: press rocker up and press rocker down.

The mounting base can be screwed onto a flat surface or glued to the wall, on glass or on furniture using the enclosed adhesive foil. Use the sleeves in the 55 mm socket box for screw mounting.

**FUD61NPN-230V:** Universal dimmer switch, 300 W power MOSFET. Automatic lamp detection. Only 0.7 watt standby loss. With adjustable minimum brightness or dimming speed. With switching operation for light alarm clocks, children's rooms and snooze function. Additionally with light scene control. Encrypted wireless, bidirectional wireless and repeater function are switchable.

For installation. 45 mm long, 45 mm wide, 33 mm deep.

Universal dimmer switch for lamps up to 300 W, dependent on ventilation conditions. Dimmable energy saving lamps ESL and dimmable 230 V-LED lamps, additionally dependent on the lamps electronics.

Zero passage switching with soft ON and soft OFF to protect lamps.

Supply voltage, switching voltage and control voltage local 230 V. No minimum load.

The brightness level is stored on switch-off (memory).

BPD	Blisterpack dimming	EAN 4010312314241	139,70 €/pc.
-----	---------------------	-------------------	--------------



## BPS

**Blisterpack switching with wireless pushbutton F2T65 and wireless actuator impulse switch with integrated relay function FSR61-230V. Smart Home sensor and Smart Home actuator.**

**F2T65:** Wireless pushbutton pure white glossy for single mounting 84 x 84 x 16 mm or mounting into the E-Design65 switching system. Generates the power for wireless telegrams itself when the button is pressed, therefore there is no connecting wire and no standby loss.

Wireless pushbuttons with one rocker can transmit two evaluable signals: press rocker up and press rocker down.

The mounting base can be screwed onto a flat surface or glued to the wall, on glass or on furniture using the enclosed adhesive foil. Use the sleeves in the 55 mm socket box for screw mounting.

**FSR61-230V:** Wireless actuator impulse switch with integrated relay function. 1 NO contact potential free 10 A/250 V AC, incandescent lamps up to 2000 watts, off delay with switch-off early warning and switchable pushbutton permanent light. Encrypted wireless, bidirectional wireless and repeater function are switchable. Only 0.8 watt standby loss.

For installation. 45 mm long, 45 mm wide, 33 mm deep.

Supply voltage and control voltage locally 230 V.

If a power failure occurs, the switching state is retained. If a power failure occurs repeatedly, the device is switched off in a defined sequence. After installation, wait for short automatic synchronisation before the switched consumer is connected to the mains.

In addition to the wireless control input via an internal antenna, this universal impulse switching relay can also be controlled locally by a conventional control switch if fitted previously. Glow lamp current is not permitted.

BPS	Blisterpack switching	EAN 4010312314258	118,20 €/pc.
-----	-----------------------	-------------------	--------------



## BPD55

**Blisterpack dimming with wireless pushbutton F2T55E and universal dimmer switch FUD61NPN-230V. Smart Home sensor and Smart Home actuator.**

**F2T55E:** Wireless pushbutton pure white glossy for single mounting 84 x 84 x 15 mm or mounting into the E-Design55 switching system. Generates the power for wireless telegrams itself when the button is pressed, therefore there is no connecting wire and no standby loss.

Wireless pushbuttons with one rocker can transmit two evaluable signals: press rocker up and press rocker down.

The mounting base can be screwed onto a flat surface or glued to the wall, on glass or on furniture using the enclosed adhesive foil. Use the sleeves in the 55 mm socket box for screw mounting.

**FUD61NPN-230V:** Universal dimmer switch, 300 W power MOSFET. Automatic lamp detection. Only 0.7 watt standby loss. With adjustable minimum brightness or dimming speed. With switching operation for light alarm clocks, children's rooms and snooze function. Additionally with light scene control. Encrypted wireless, bidirectional wireless and repeater function are switchable.

For installation. 45 mm long, 45 mm wide, 33 mm deep.

Universal dimmer switch for lamps up to 300 W, dependent on ventilation conditions. Dimmable energy saving lamps ESL and dimmable 230 V-LED lamps, additionally dependent on the lamps electronics.

Zero passage switching with soft ON and soft OFF to protect lamps.

Supply voltage, switching voltage and control voltage local 230 V. No minimum load.

The brightness level is stored on switch-off (memory).

<b>BPD55</b>	Blisterpack dimming	EAN 4010312317839	<b>139,70 €/pc.</b>
--------------	---------------------	-------------------	---------------------



## BPS55

**Blisterpack switching with wireless pushbutton F2T55E and wireless actuator impulse switch with integrated relay function FSR61-230V. Smart Home sensor and Smart Home actuator.**

**F2T55E:** Wireless pushbutton pure white glossy for single mounting 84 x 84 x 15 mm or mounting into the E-Design55 switching system. Generates the power for wireless telegrams itself when the button is pressed, therefore there is no connecting wire and no standby loss.

Wireless pushbuttons with one rocker can transmit two evaluable signals: press rocker up and press rocker down.

The mounting base can be screwed onto a flat surface or glued to the wall, on glass or on furniture using the enclosed adhesive foil. Use the sleeves in the 55 mm socket box for screw mounting.

**FSR61-230V:** Wireless actuator impulse switch with integrated relay function. 1 NO contact potential free 10 A/250 V AC, incandescent lamps up to 2000 watts, off delay with switch-off early warning and switchable pushbutton permanent light. Encrypted wireless, bidirectional wireless and repeater function are switchable. Only 0.8 watt standby loss.

For installation. 45 mm long, 45 mm wide, 33 mm deep.

Supply voltage and control voltage locally 230 V.

If a power failure occurs, the switching state is retained. If a power failure occurs repeatedly, the device is switched off in a defined sequence. After installation, wait for short automatic synchronisation before the switched consumer is connected to the mains.

In addition to the wireless control input via an internal antenna, this universal impulse switching relay can also be controlled locally by a conventional control switch if fitted previously. Glow lamp current is not permitted.

<b>BPS55</b>	Blisterpack switching	EAN 4010312317846	<b>118,20 €/pc.</b>
--------------	-----------------------	-------------------	---------------------



## BPB

**Blisterpack shading with wireless pushbutton F2T65 and wireless actuator for shading elements and roller shutters FSB61NP-230V. Smart Home sensor and Smart Home actuator.**

**F2T65:** Wireless pushbutton pure white glossy for single mounting 84 x 84 x 16 mm or mounting into the E-Design65 switching system. Generates the power for wireless telegrams itself when the button is pressed, therefore there is no connecting wire and no standby loss.

Wireless pushbuttons with one rocker can transmit two evaluable signals: press rocker up and press rocker down.

The mounting base can be screwed onto a flat surface or glued to the wall, on glass or on furniture using the enclosed adhesive foil. Use the sleeves in the 55 mm socket box for screw mounting.

**FSB61NP-230V:** Wireless actuator for shading elements and roller shutters. 1+1 NO contact not potential free 4 A/250 V AC, for roller blinds and shading systems. Encrypted wireless, bidirectional wireless and repeater function are switchable. Only 0.8 watt standby loss.

For installation. 45 mm long, 45 mm wide, 33 mm deep.

Supply voltage, switching voltage and control voltage local 230 V.

If a power failure occurs, the device is switched off in a defined sequence.

In addition to the wireless control input via an internal antenna, this wireless actuator can also be controlled locally by a conventional 230 V control switch previously mounted.

<b>BPB</b>	Blisterpack shading	EAN 4010312316979	<b>126,60 €/pc.</b>
------------	---------------------	-------------------	---------------------



## BPB55

**Blisterpack shading with wireless pushbutton F2T55E and wireless actuator for shading elements and roller shutters FSB61NP-230V. Smart Home sensor and Smart Home actuator.**

**F2T55E:** Wireless pushbutton pure white glossy for single mounting 84 x 84 x 15 mm or mounting into the E-Design55. Generates the power for wireless telegrams itself when the button is pressed, therefore there is no connecting wire and no standby loss.

Wireless pushbuttons with one rocker can transmit two evaluable signals: press rocker up and press rocker down.

The mounting base can be screwed onto a flat surface or glued to the wall, on glass or on furniture using the enclosed adhesive foil. Use the sleeves in the 55 mm socket box for screw mounting.

**FSB61NP-230V:** Wireless actuator for shading elements and roller shutters. 1+1 NO contact not potential free 4 A/250 V AC, for roller blinds and shading systems. Encrypted wireless, bidirectional wireless and repeater function are switchable. Only 0.8 watt standby loss.

For installation. 45 mm long, 45 mm wide, 33 mm deep.

Supply voltage, switching voltage and control voltage local 230 V.

If a power failure occurs, the device is switched off in a defined sequence.

In addition to the wireless control input via an internal antenna, this wireless actuator can also be controlled locally by a conventional 230 V control switch previously mounted.

<b>BPB55</b>	Blisterpack shading	EAN 4010312317822	<b>126,60 €/pc.</b>
--------------	---------------------	-------------------	---------------------

## ACCESSORIES

### JUMPERS STS14, WET.PROTECT WP50 AND WIRELESS POWERNET PHASE COUPLER FPP12



Lx	
Ly	

## STS14

STS14 set of jumpers for Series 14, 7 pieces.

STS14	Jumpers	EAN 4010312314975	6,30 €/pc.
-------	---------	-------------------	------------

## WP50

WET.PROTECT e.nautic 50ml.

High-performance protection against humidity, moisture and corrosion. This water blocker completely infiltrates any moisture and humidity. It creates a micro-thin protective film with extremely water repellent effect. The dielectric strength is extremely high with 200 kV/mm. Due to the salt water resistance, it is not only perfect for the use in winter as it protects against the effects of road salt, but also for applications close to the sea. Wireless pushbuttons treated with this spray according to the operating manual even remain fully functional outdoors on the weather side for years.

WP50	WET.PROTECT 50 ml	EAN 4010312907306	21,10 €/pc.
------	-------------------	-------------------	-------------

## FPP12



Wireless Powernet phase coupler to transmit wireless telegrams over the 230 V power mains. Only 0.2 watt standby loss.

Modular device for DIN-EN 60715 TH35 rail mounting.

1 module = 18 mm wide, 58 mm deep.

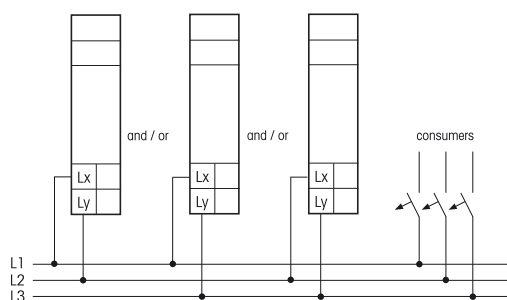
Voltage between the two outer conductors: 400 V/50 Hz.

Frequency range 115-132 kHz.

The phase coupler increases the capacitive coupling between 2 different outer conductors if, for example, the cables within the installation are not laid in parallel at a distance of at least several metres apart (as ribbon cables or jacketed cables).

**Caution:** The phase coupler may only be connected to the input side of the line circuit-breaker.

### Typical connection



FPP12	Wireless Powernet phase coupler	EAN 4010312311769	25,40 €/pc.
-------	---------------------------------	-------------------	-------------

**ACCESSORIES**  
**WIRELESS MP3 PLAYER**



## FMP3

**Wireless MP3 player to play back MP3 files such as music, noises and sounds. With internal loudspeaker, USB port, micro USB port, 3.5 mm jack socket to connect stereo headphones and a 3.5 mm jack socket to connect an external loudspeaker.**

Plastic housing, pure white, l x w x h: 165 x 70 x 35 mm with oblong holes for wall mounting and plastic feet for placing on flat surfaces, weight 230 grams.

The scope of supply comprises a USB stick (plugged as delivered in the USB port) containing MP3 files, a 5 V plug-in power adapter with micro USB cable and a 3.5 mm jack plug with screw terminals to connect an external loudspeaker.

Up to 120 sensors, e.g. wireless pushbuttons, wireless window/door contacts and wireless motion detection sensors, can be taught in.

Up to 50 different tracks can be played back.

Eltako has stored examples of noises and sounds on the USB stick with the kind approval of the operator of the internet platform [www.salamisound.de](http://www.salamisound.de). You can supplement or replace them.

We also recommend the website [www.audiyou.de](http://www.audiyou.de) as an additional source to download sounds.

**Possible applications:**

- doorbell with a variety of different tracks for various sensors
- acoustic signalling device for open/close doors, cabinets or drawers
- acoustic signalling device for motion detection
- repetitive acoustic signal for open doors (e.g. refrigerator)
- acoustic confirmation signal for any incident in the Eltako wireless building system

<b>FMP3</b>	Wireless MP3 player	EAN 4010312317853	<b>142,40 €/pc.</b>
-------------	---------------------	-------------------	---------------------



## KNX ENO 626



**Bidirectional gateway between EnOcean wireless and KNX bus with 8 channels from Weinzierl, flush mounting.**

The KNX ENO 626 secure acts as a bidirectional gateway between EnOcean Wireless and the KNX/EIB bus. Control commands and measured values can be transmitted by EnOcean wireless sensors to the KNX bus, for example to control KNX actuators. Similarly, EnOcean wireless actuators can be controlled by KNX. The KNX ENO 626 secure from Weinzierl allows encrypted communication with security compatible EnOcean devices.

The KNX ENO 626 secure has 8 wireless channels and accepts over 100 EEP (EnOcean Equipment Profile), it allows an easy and secure connection from different EnOcean sensors and actor to a KNX installation. In addition the gateway offers logic functions and comprises an integrated wireless repeater.

**The configuration** is done with the KNX ENO-Tool, downloadable on [weinzierl.de](http://weinzierl.de).

**Flush mounting** in a 55 mm wall box.

**The repeater function** is designed to bridge large distances between sensors and actuators. The KNX ENO 626 is a Level 1 wireless repeater.

<b>KNX ENO 626</b>	EnOcean KNX gateway	EAN 4010312318911	<b>275,80 €/pc.</b>
--------------------	---------------------	-------------------	---------------------



## KNX ENO 636



**Bidirectional gateway between EnOcean wireless and KNX bus with 32 channels from Weinzierl, 81 x 81 x 25 mm.**

The KNX ENO 636 secure acts as a bidirectional gateway between EnOcean Wireless and the KNX/ EIB bus. Control commands and measured values can be transmitted by EnOcean wireless sensors to the KNX bus, for example to control KNX actuators. Similarly, EnOcean wireless actuators can be controlled by KNX. The KNX ENO 636 secure from Weinzierl allows encrypted communication with security compatible EnOcean devices.

The KNX ENO 636 secure has 32 wireless channels and accepts over 100 EEP (EnOcean Equipment Profile), it allows an easy and secure connection from different EnOcean sensors and actor to a KNX installation. In addition the gateway offers logic functions and comprises an integrated wireless repeater.

**The configuration** is done with the KNX ENO-Tool, downloadable on [weinzierl.de](http://weinzierl.de).

**Surface mounting** by means of a 55 mm flush mount box. Power is supplied over the KNX bus.

**The repeater function** is designed to bridge large distances between sensors and actuators. The KNX ENO 636 is a Level 1 wireless repeater.



<b>KNX ENO 636</b>	EnOcean KNX gateway	EAN 4010312318904	<b>440,40 €/pc.</b>
--------------------	---------------------	-------------------	---------------------



## ACCESSORIES - ENOCEAN FIELD TEST TOOL P10 PROBARE AND WIRELESS PUSHBUTTON INSERTS WITH ENOCEAN ENERGY GENERATORS



### P10

The EnOcean field test tool Probare P10 is a portable field tester which shows the signal quality of the received EnOcean 868MHz telegrams. Additionally it helps to determine the best place for EnOcean transmitters, receivers or repeaters, it can also help to look if any signals are sent or not.

2 AA/LR06 batteries are additionally necessary.

Switch on and off by pressing the ON/OFF button for 1.5 seconds.

The signal quality is shown by LEDs.

With the MODE button you can switch between the different functions.

**All** shows the signal quality of all received EnOcean telegrams.

**Filter** shows the signal quality of one unique transmitter.

**Repeater** activates the repeater function (level 1) by this way you can determine the best position for a repeater.

**Radio Link Test** allows the wireless coverage testing in combination with the adequate receiver by sending telegrams cyclically.

P10	Wireless level meter Probare	EAN 4010312317068	114,90 €/pc.
-----	------------------------------	-------------------	--------------



### FTE...



Wireless pushbutton inserts with EnOcean energy generators for wireless pushbuttons made by other manufacturers. Generates the power for wireless telegrams itself when the button is pressed, therefore there is no connecting wire and no standby loss.

The scope of supply comprises the mounting base and an attachment frame for FT55 with EnOcean module inserts PTM215 (encrypted) or PTM215B (Bluetooth).

Wireless pushbuttons with one rocker can transmit two evaluable signals. Wireless pushbuttons with double rocker can transmit four evaluable signals.

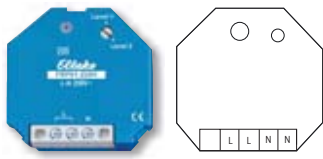
FT55 rockers W-FT55 and double rockers DW-FT55, also with laser engraving, page 8-19.



FTE215	Wireless pushbutton insert, encrypted	EAN 4010312318539	34,20 €/pc.
FTE215BLE	Wireless pushbutton insert, Bluetooth	EAN 4010312318553	36,30 €/pc.

## ACCESSORIES

### WIRELESS REPEATERS FRP61-230V AND WIRELESS SOCKET REPEATER FSRP-230V



## FRP61-230V



**1 and 2 level wireless repeaters. Only 0.7 watt standby loss.**

For installation. 45 mm long, 45 mm wide, 33 mm deep.

Supply voltage 230 V.

This repeater is only needed if the building conditions prevent undisturbed reception or the distance between the wireless pushbutton and receiver is too great.

The 1-level mode is activated ex works. Only wireless signals from sensors are received, tested and retransmitted at full transmit power. Wireless signals from other repeaters are ignored to reduce the data volume.

**Use the rotary switch** to switch over to 2 level mode. Then the wireless signals from sensors and from another 1 level repeater are processed. A signal may therefore be received and amplified twice.

**The LED** indicates incoming wireless signals by flashing briefly.

Wireless repeaters need not be taught-in. They receive and amplify signals from all wireless sensors within their reception area.

FRP61-230V	Wireless repeater	EAN 4010312300251	53,70 €/pc.
------------	-------------------	-------------------	-------------



## FSRP-230V



**1- and 2-level wireless socket repeater. Only 0.7 watt standby loss.**

Adapter for German fused safety socket. With increased shock protection.

This repeater is only needed if the building conditions do not allow undisturbed reception or the distance between the wireless pushbutton and receiver is too great.

The 2-level mode is activated ex works. Sensor wireless signals are then processed in addition to the wireless signals of another 1-level repeater. A wireless signal can then receive and amplify a maximum of two times.

**From production week 31/18:** By multiple unplugging and plugging can be switched to the 1-level mode.

Now only the wireless signals from sensors are received and amplified. Wireless signals from other repeaters are ignored to reduce the amount of data.

**Activate 1-level mode:**

Briefly unplug and replug the adapter plug 3 times at intervals of 1 second within a period of 10 seconds.

**Activate 2-level mode:**

Briefly unplug and replug the adapter plug 5 times at intervals of 1 second within a period of 20 seconds.

Wireless repeaters need not be taught-in. They receive and amplify signals from all wireless sensors within their reception area.

FSRP-230V	Wireless socket repeater	EAN 4010312314999	68,90 €/pc.
-----------	--------------------------	-------------------	-------------

WEEE-Reg.-Nr. DE 30298319

## ACCESSOIRES

### WIRELESS REPEATERS FRP70-230V AND FRP65/230V-WG



FA250

## FRP70-230V



**1 and 2 level wireless repeater with small antenna and with antenna FA250. Only 0.6 watt standby loss. A wireless antenna FA250 is connectable as required.**

Mounting in the 230 V power supply cord, e.g. in false ceilings.

100 mm long, 50 mm wide and 25 mm deep.

This repeater is only needed if the building conditions prevent undisturbed reception or the distance between the wireless pushbutton and receiver is too great. Antenna FA250 with 250 cm cable is connectable instead of the enclosed antenna. The range can be extended considerably by placing it in the optimum position. The 1-level mode is activated ex works. Only wireless signals from sensors are received, tested and retransmitted at full transmit power. Wireless signals from other repeaters are ignored to reduce the data volume.

**Use the rotary switch** to switch over to 2 level mode. Then the wireless signals from sensors and from another 1 level repeater are processed. A signal may therefore be received and amplified twice.

**The LED** indicates incoming wireless signals by flashing briefly.

Wireless repeaters need not be taught-in. They receive and amplify signals from all wireless sensors within their reception area.

<b>FRP70-230V</b>	Wireless repeater	EAN 4010312306482	<b>94,20 €/pc.</b>
<b>FA250</b>	Wireless antenna with 250 cm cable, black	EAN 4010312300244	<b>21,80 €/pc.</b>
<b>FA250-gw</b>	Wireless antenna with 250 cm cable, grey white	EAN 4010312317051	<b>21,80 €/pc.</b>



## FRP65/230V-wg



**2 level wireless repeaters in the housing for single mounting 84 x 84 x 30 mm or mounting into the E-design switching system. Only 0.8 watt standby loss.**

We recommend stainless-steel countersunk screws 2.9 x 25 mm, DIN 7982 C, for screw connections.

Set of 2 stainless-steel countersunk screws 2.9 x 25 mm and plugs 5 x 25 mm are enclosed.

Supply voltage 230 V.

This repeater is only needed if the building conditions prevent undisturbed reception or the distance between the wireless pushbutton and receiver is too great.

The 2-level mode is activated. The signals from sensors and actuators are received, tested and retransmitted with full transmitting power.

The wireless signals from another 1-level repeater are also being processed.

A signal may therefore be received and amplified twice.

Wireless repeaters need not be taught-in. They receive and amplify signals from all wireless sensors within their reception area.

<b>FRP65/230V-wg</b>	Wireless repeater pure white glossy	EAN 4010312315927	<b>72,90 €/pc.</b>
----------------------	-------------------------------------	-------------------	--------------------



## FARP60-230V



**Outside wireless repeater 1 and 2 levels, 60 x 46 mm, 30 mm deep. Only 0.7 watt standby loss.**

Supply voltage 230 V.

This repeater is only needed if the building conditions prevent undisturbed reception or the distance between the wireless pushbutton and receiver is too great.

The 1-level mode is activated ex works. Only the signals from sensors and actuators are received, tested and retransmitted at full transmit power. Wireless signals from other repeaters are ignored to reduce the data volume.

Switchover to 2-level mode is carried out by removing the cover (loosen two screws on the front panel) and repositioning the jumper flush right. In this setting, wireless signals from other 1-level repeaters are also processed. A signal may therefore be received and amplified twice.

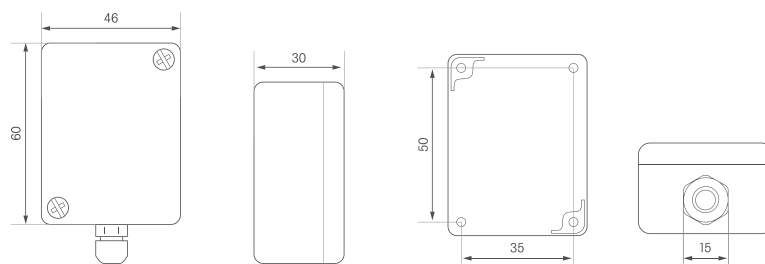
A red LED blinks briefly to indicate all the wireless signals detected.

Wireless repeaters need not be taught-in. They receive and amplify signals from all wireless sensors within their reception area.

On the underside there is an M12 screw for a waterproof mains connection.

The protection class is IP54, the allowable ambient temperature is -20°C to +55°C.

For screw mounting.



<b>FARP60-230V</b>	Outdoor wireless repeater	EAN 4010312310137	<b>69,70 €/pc.</b>
--------------------	---------------------------	-------------------	--------------------

## ACCESSOIRES - WIRELESS TRANSMITTER MODULE FSM60B WITH BATTERIES AND WIRELESS OUTDOOR TRANSMITTER MODULE FASM60-UC



### FSM60B



**Wireless transmitter module with batteries and antenna rod. L x W x H: 60 x 46 x 30 mm (dimensions excluding antenna and fixing screws).**

This wireless transmitter module can be operated by a water sensor FWS60 or a pushbutton and transmits a variety of adjustable wireless telegrams to the Eltako building wireless system.

An internal jumper permits selection between 4 operating modes.

In mode 1 (jumper plugged at Position JP1) wireless telegrams is sent from a wireless pushbutton, such as 'Press double rocker at bottom left'.

In mode 2 (jumper plugged at Position 2) wireless telegrams is sent from a wireless pushbutton, such as 'Press double rocker at top right and bottom right'.

In mode 3 (jumper plugged at Position 3; factory setting) wireless telegrams is sent to EnOcean Standard EEP A5-30-03.

In mode 4 (jumper plugged at Position 4) wireless telegrams is sent to EnOcean Standard EEP A5-30-01.

In modes 3 and 4 a status telegram is also sent every 33 minutes.

The power supply that lasts several years is provided by an internal 3V button cell CR2032. The charge status of the battery is transmitted in every data and status telegram in mode 4.

Press the internal LRN button **to teach in** the actuator which is ready for teach-in.

Release two screws on the front to remove the cover. When closing, make sure the seal is in the correct position.

An M12 screw is located on the underside to connect the cable.

It is not permitted to activate several wireless transmitter modules at the same time.

<b>FSM60B</b>	Transmitter module with batteries	EAN 4010312316092	<b>59,60 €/pc.</b>
---------------	-----------------------------------	-------------------	--------------------



### FASM60-UC



**Wireless outdoor transmitter module 2 channels. L x W x H: 60 x 46 x 30 mm (dimensions excluding fixing screws). With internal antenna. No standby loss.**

The wireless transmitter module FASM60-UC has two channels and can transmit wireless pushbutton telegrams to the Eltako building wireless system. A1 initiates a wireless telegram, such as 'Press top rocker' for a wireless pushbutton with one rocker and A3 such as 'Press bottom rocker'. The telegram on opening the two control contacts is identical to 'Release wireless pushbutton'. Several wireless transmitter modules must not be switched at the same time.

There is a screw joint M12 at the bottom for the waterproof connection IP54. Connection to a 5-fold inside terminal for the control input +A1/-A2 and +A3/-A2. Loosen the 2 screws on the front and remove lid.

If the terminals A1 and A3 are connected with a bridge, the wireless telegram is transmitted once per minute by A3, provided the control voltage is applied, e.g. for central commands with priority.

The universal control voltage processes control commands of 8 to 253 V AC or 10 to 230 V DC with periods lasting min. 0.2 seconds.

Max. parallel capacitance of the single control leads (separately installed) at 230 V 3 nF, this corresponds to a length of approx. 10 meters. Parallel control leads (jointly installed) at 230 V 0.5 nF, approx. 2 meters.

Max. parallel capacitance (approx. length) of control lead at 12-24 V UC 0.03 µF, this corresponds to a length of approx. 100 meters.

**No permanent power supply required, therefore no standby losses.**

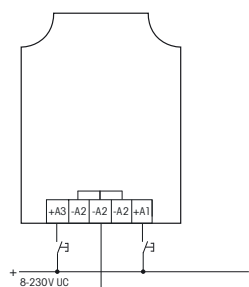
**The wireless telegrams can be encrypted.**

The internal rotary switch activates or deactivates the encryption mode, and is in operation in the center position.

**Encryption activation:** Turn the rotary switch to the right end and tap one time.

**Encryption deactivation:** Turn the rotary switch to the left end and tap one time.

#### Typical connection



<b>FASM60-UC</b>	Outdoor transmitter module 2 channels	EAN 4010312311998	<b>57,80 €/pc.</b>
------------------	---------------------------------------	-------------------	--------------------



## FA250, FHM175 AND FA200

### Wireless antenna **FA250** with magnetic base and 250 cm cable, black

The small enclosed wireless antenna of the wireless antenna modules and several wireless transmitter modules are replaceable by this larger 868MHz-HF-antenna to receive and transmit wireless signals to or from metal control cabinets. It is mounted on the magnetic base externally and the 250 cm cable is routed inside the cabinet. The best performance is achieved by attaching the magnetic foot on a metal surface. The transmit and receive ranges are almost spherical around this antenna. Antenna height, only 10 cm. With SMA screw terminal. Extension by 5 m using wireless antenna extension FAV5 or by 10 m using FAV10.

### Wireless antenna **FA250-gw** with magnetic base and 250 cm cable, grey white

Description see FA250, black.

### HF ground **FHM175** for the HF wireless antenna FA250, aluminium disc anodized, 4 mm thick, 175 mm diameter.

This HF ground optimizes the receiver and transmitter performance of the HF antenna FA250 (not included in the scope of supply) since the diameter has twice the length of the antenna plus its bar diameter. A deepened steel disc with the diameter of the magnetic antenna coil is pressed into the center. Thereby the FA250 can easily be centered. The aluminium disc is formed with a hole and a slot to be fixed to the wall.

### High-performance receive antenna **FA200** with magnetic base and 200 cm cable

This antenna has a radial gain of up to 7 dBi and therefore has a much greater range than wireless antenna FA250. As a trade-off the receive power along the antenna axis is considerably lower. This must be taken into consideration when positioning the antenna. **It may only be used as a receive antenna.** Antenna height 59 cm. With SMA screw terminal. Extension by 5 m using wireless antenna extension FAV5 or by 10 m using FAV10.

<b>FA250</b>	Wireless antenna with 250 cm cable, black	EAN 4010312300244	<b>21,80 €/pc.</b>
<b>FA250-gw</b>	Wireless antenna with 250 cm cable, grey white	EAN 4010312317051	<b>21,80 €/pc.</b>
<b>FHM175</b>	HF ground for FA250	EAN 4010312313121	<b>66,60 €/pc.</b>
<b>FA200</b>	High-performance receive antenna with 200 cm cable	EAN 4010312303306	<b>70,60 €/pc.</b>
<b>FAV5</b>	Antenna extension 5 m	EAN 4010312302897	<b>28,50 €/pc.</b>
<b>FAV10</b>	Antenna extension 10 m	EAN 4010312302903	<b>35,80 €/pc.</b>

## ACCESSORIES

### WIRELESS ANTENNA FAG65, SURFACE CAP K81, SPACER DS12 AND SOCKET OUTLET ST12-16A



## FAG65-wg



Wireless antenna in the housing for single mounting 84 x 84 x 30 mm or mounting into the E-design switching system. With 100 cm cable.

We recommend stainless-steel countersunk screws 2.9 x 25 mm, DIN 7982 C, for screw connections. Set of 2 stainless-steel countersunk screws 2.9 x 25 mm and plugs 5 x 25 mm are enclosed. In the housing there is a wireless antenna with ground plane and permanently attached antenna cable, 100 cm long, with SMA screw.

Image without frame

FAG65-wg	Wireless antenna pure white glossy	EAN 4010312315910	33,70 €/pc.
----------	------------------------------------	-------------------	-------------

## K81

Surface cap

For series 81,  
l x w x h = 60 x 60 x 37 mm.

K81	Surface cap	EAN 4010312901236	4,70 €/pc.
-----	-------------	-------------------	------------

## DS12

Spacer

1/2 module wide = 9 mm, to produce and maintain a ventilation clearance for modular devices dissipating much heat, e.g. dimmers from 300 W/400 W and continuously rated electromechanical impulse switches.

DS12	Spacer	EAN 4010312900987	1,10 €/pc.
------	--------	-------------------	------------

## ST12-16A

Socket outlet

Socket outlet 16 A as modular device for mounting on DIN-EN 60715 TH35 rail or as built-in device. 2.5 modules = 45 mm wide, 55 mm deep.

ST12-16A	Socket outlet	EAN 4010312700358	18,50 €/pc.
----------	---------------	-------------------	-------------



## PK18

### Sealing cap

For all sealable modular devices of series 12 with one module. Covers the back terminals as well as the latched sliding switch and can be sealed. If necessary two sealing caps can be used, one above and one below.

<b>PK18</b>	Sealing cap	EAN 4010312901403	<b>1,10 €/pc.</b>
-------------	-------------	-------------------	-------------------



## S+D 25

**25 pcs screws and rawl plugs to fit the mounting plate for wireless pushbuttons. Screws also for fitting on UP boxes.**

Contents: 25 pcs countersunk sheet metal screws with cross head 2.9x25 mm DIN 7982 C, stainless steel A2 and 25 pcs Fischer rawl plugs with lip SX5, 25 mm long.

The screw head fits exactly (in height and diameter) between the mounting plate of the wireless pushbutton and the Eltako frame.

Moreover, the screws are also suitable for fixing devices on UP switch boxes in the screw sleeves there.

<b>S+D 25</b>	25 screws and rawl plugs 25 mm	EAN 4010312906231	<b>5,20 €/pc.</b>
---------------	--------------------------------	-------------------	-------------------



## RC12-230V

### Triple RC module

Modular device for DIN-EN 60715 TH35 rail mounting.

1 module = 18 mm wide, 55 mm deep.

Used to compensate for inductive interference voltages on control leads. Up to three switchgear devices can be interference-suppressed by connection in parallel with the 230 V control inputs.

<b>RC12-230V</b>	Triple RC module	EAN 4010312201596	<b>32,30 €/pc.</b>
------------------	------------------	-------------------	--------------------



## GBA12 AND GBA14

### Housing for operating instructions

Modular device for DIN-EN 60715 TH35 rail mounting. 1 module = 18 mm wide, 55 mm deep.

Housing without front panel to insert operating instructions.

<b>GBA12</b>	Housing for operating instr., grey-blue	EAN 4010312901779	<b>2,20 €/pc.</b>
<b>GBA14</b>	Housing for operating instr., white-blue	EAN 4010312906422	<b>2,20 €/pc.</b>