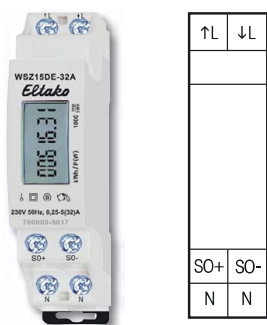
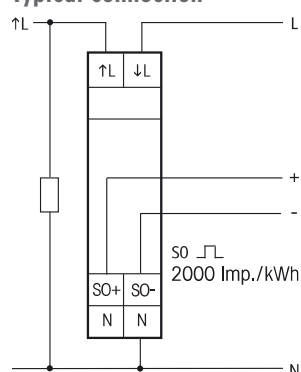


Single-phase Energy Meter WSZ15DE-32A, without approval

Eltako
ELECTRONICS



Typical connection



WSZ15DE-32A

Maximum current 32A. Standby loss 0.5 watt only.

Modular device for DIN-EN 60715 TH35 rail mounting. 1 module = 18mm wide and 58mm deep.

Accuracy class B (1%). With SO interface.

It measures active energy by means of the current between input and output. The internal power consumption of 0.5 watt active power is neither metered nor indicated. Like all meters without declaration of conformity (e.g. MID), this meter is not permitted for billing.

Every 30 seconds, the display switches for 5 seconds from the accumulated active energy in kWh to the momentary consumption in watts.

1 phase conductor with a max. current up to 32A can be connected. If the anticipated load exceeds 50%, maintain an air gap of ½ pitch unit to the devices mounted adjacently.

If necessary, use spacer DS12. The inrush current is 20mA. The display can only be read when the power supply is on. However, the consumption is saved to a non-volatile memory and is displayed immediately after power restoration.

Two N terminals for secure cross wiring of several counters.

The flashing decimal point is dependent on power consumption and indicates that power is being consumed. If the connection is incorrectly wired, the display shows the message 'false'.

The digital display has 7 digits. Two decimal places are indicated up to 99999.99kWh. Above 100000.0kWh there is only one decimal place. Assuming the maximum theoretical power consumption, the display would have a service life of more than 15 years.

WSZ15DE-32A

Single-phase energy meter,
without approval

EAN 4010312501702

46,20 €/pc.