

SIENNA® Professional

Operating Instructions V5.1

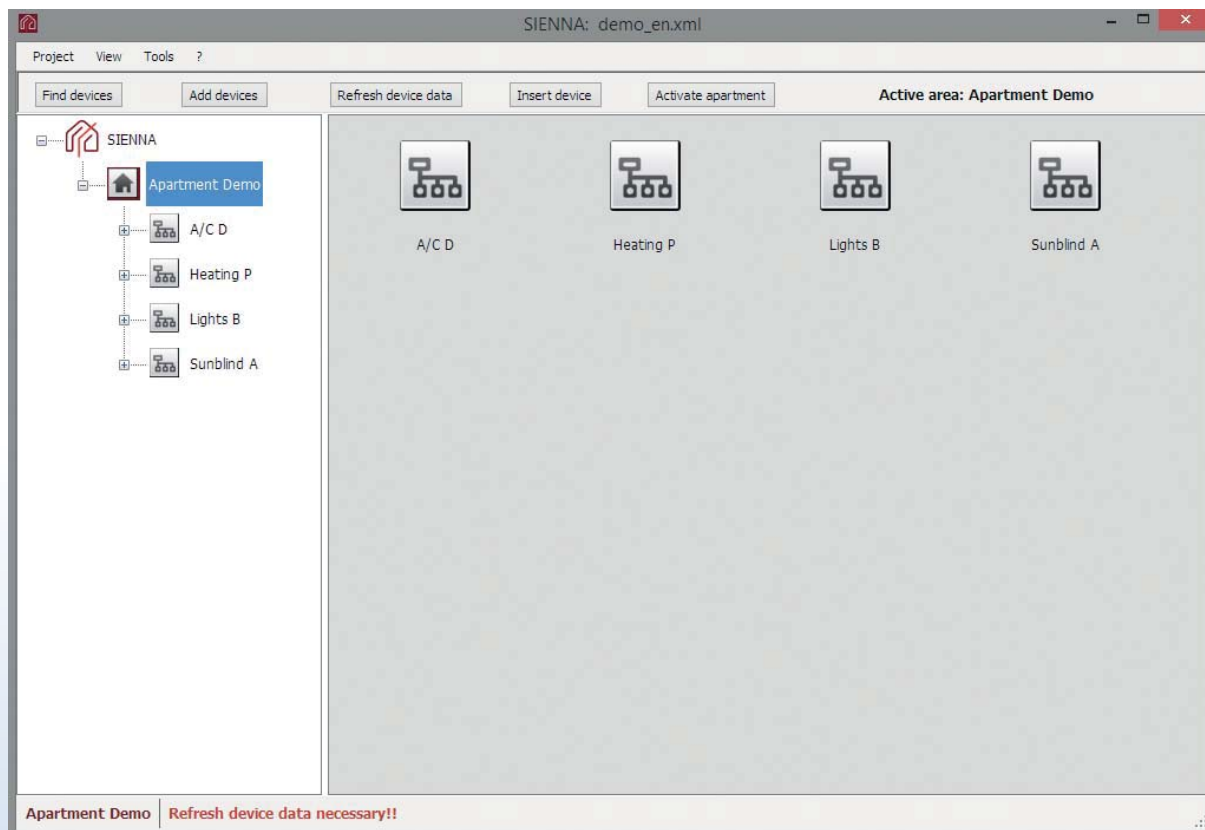


Table of contents

1.	Introduction	2
1.1	Commands.....	2
1.2	Switching and control.....	3
2.	Context menu	4
2.1	Context menu Apartment	4
2.2	Context menu Group.....	5
2.3	Context menu Device Group	6
2.4	Context menu Actuator	7
2.5	Context menu Sensor.....	8
2.6	Context menu Serial gateway.....	9
2.7	Context menu EnOcean gateway	10
3.	Menu items	11
3.1	Menu item Project	11
3.2	Menu item View	12
3.3	Menu item Tools.....	13
3.4	Menu item '?'	14

1. Introduction

The program requires an active connection to the 230V power network via the USB coupling element PL-SW-PROF. **The demo version can be started without an existing bus coupling.** With the demo version there is no access to the existing PL modules. The configuration commands are disabled in the trial version.



1.1 Commands

- **Find devices:** Searches the 230V network and displays all PL modules that are connected to the 230V power network. Please note that this command initializes the data set and deletes the currently displayed data.
- **Find devices:** Searches for additional PL modules that have been connected to the 230V power network. The currently displayed data set is retained.
- **Refresh device data:** Updates module data: Reads the current configuration settings and the state of the modules. Please note that only unconfigured modules and modules that are attached to an active apartment are updated.
- **Insert device:**
Individual PL modules can be manually inserted to an active project. To insert a device proceed as follows:
 - Connect device to the 230V mains power
 - Click 'Insert device'
 - Push the service pin (Button labeled 'P') on the module
- **Activate apartment:**
In order to access a PL elements the corresponding apartment needs to be active. Configuration and control of PL elements is allowed only within an apartment that is active. To activate an apartment proceed as follows:
 - a) Click the menu item 'Activate' to activate the selected apartment

b) You may either

- select a configured sensor within the selected apartment. Switch this sensor 10 times within a time interval of 5 seconds to activate the currently selected apartment, or
- push the service pin on a configured module within the selected apartment.

The currently active apartment is highlighted in gray in the tree view displayed on the left side of the screen.

Please note that only a single apartment can be active at any one time. Activating a new apartment automatically deactivates the previously active apartment.

Note: The function described above is available only in the installer mode.

If a particular apartment needs to be active in the user mode, this apartment has to be activated in the installer mode and saved as a project.

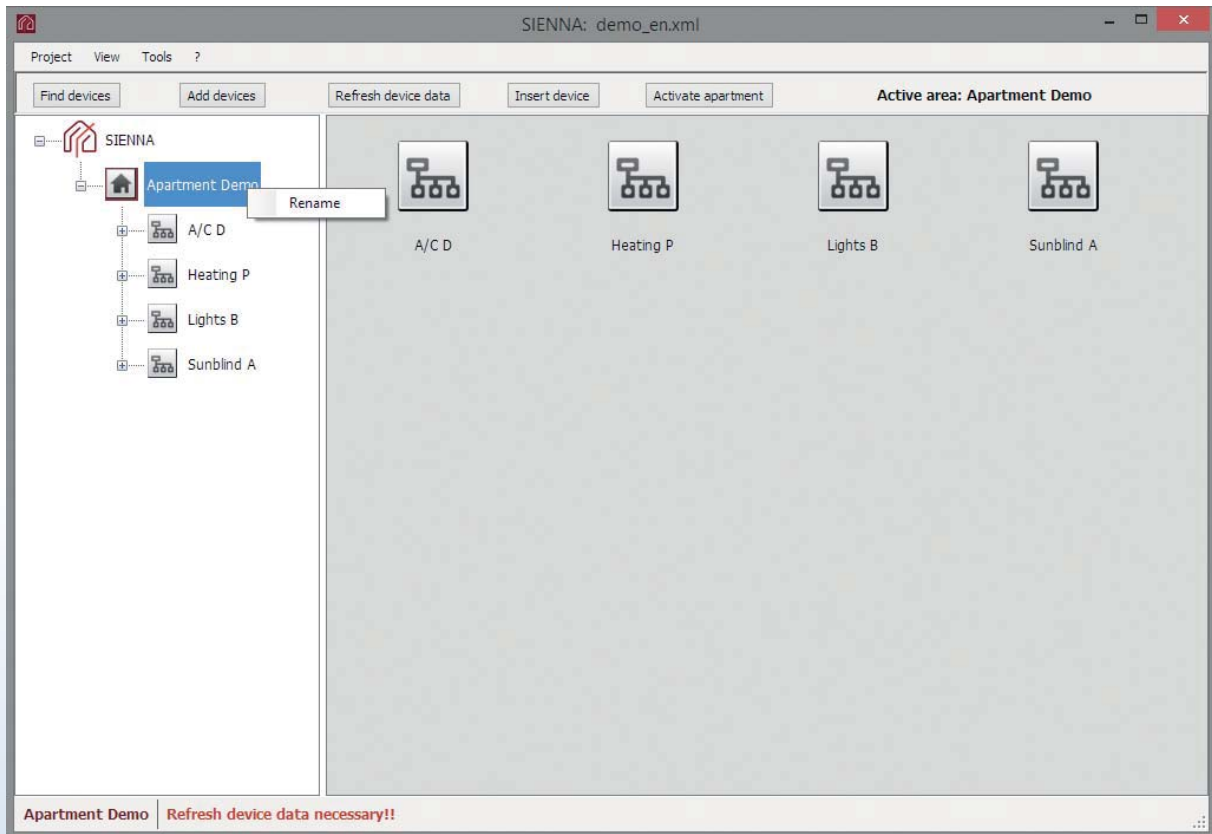
1.2 Switching and control

The actuators can be controlled by clicking the left mouse button either on the desired actuator icon or on the corresponding sensor icon.

2. Context menu

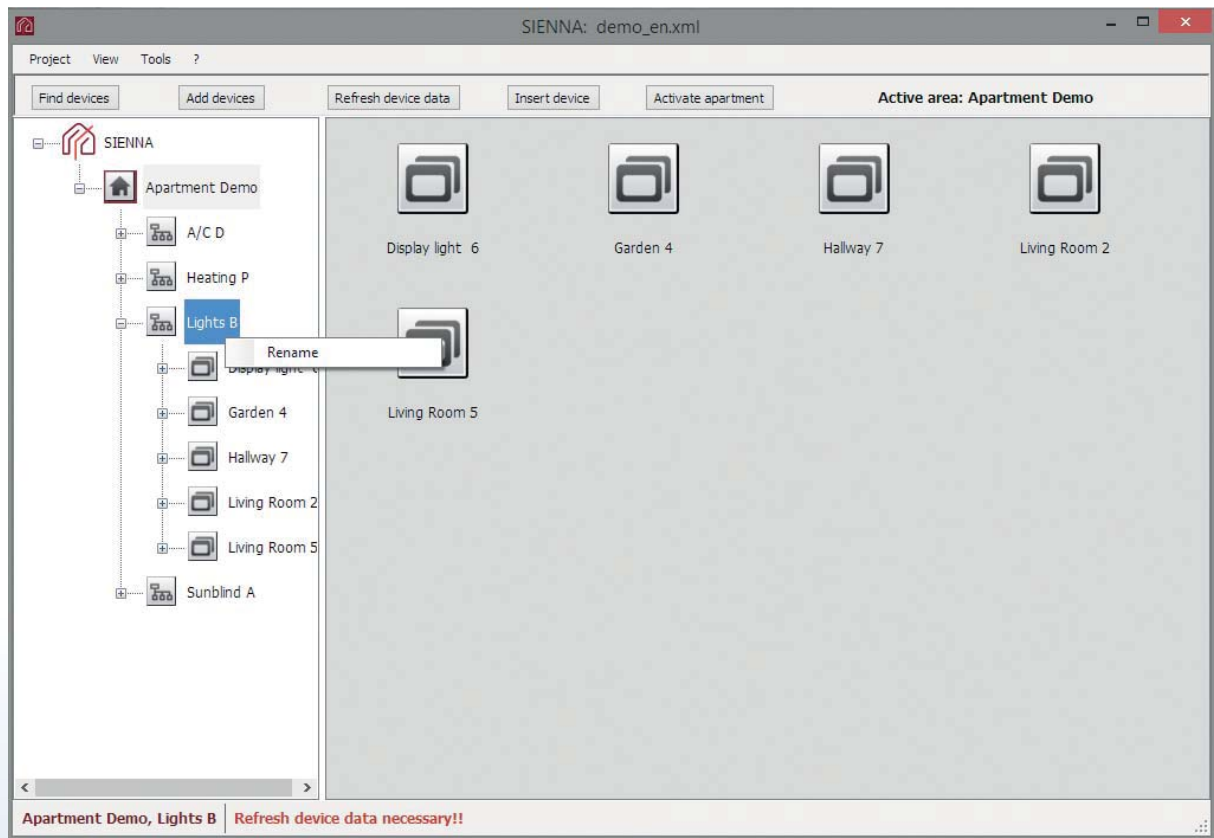
The context menu can be displayed by clicking the right mouse button. Therefore the icons in the right window are used.

2.1 Context menu Apartment



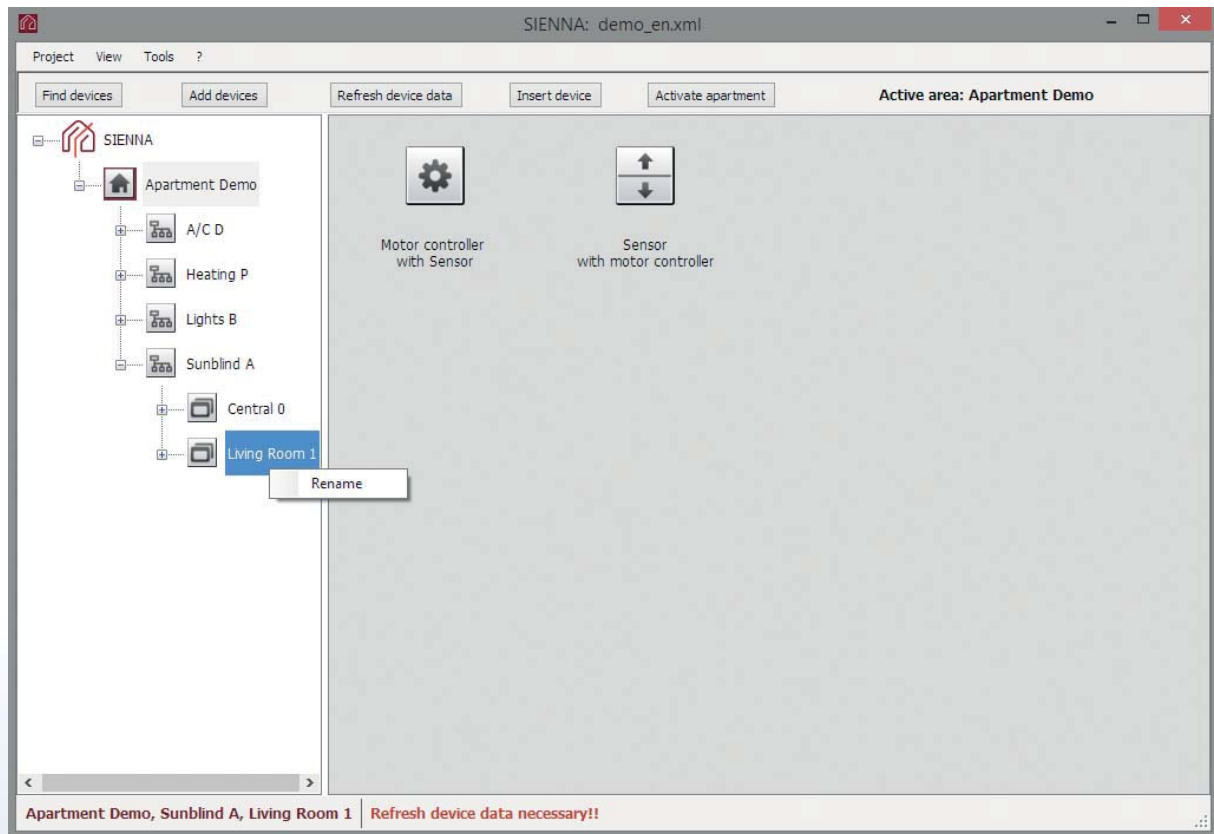
- **Rename:** Allows selected apartment to be renamed.

2.2 Context menu Group



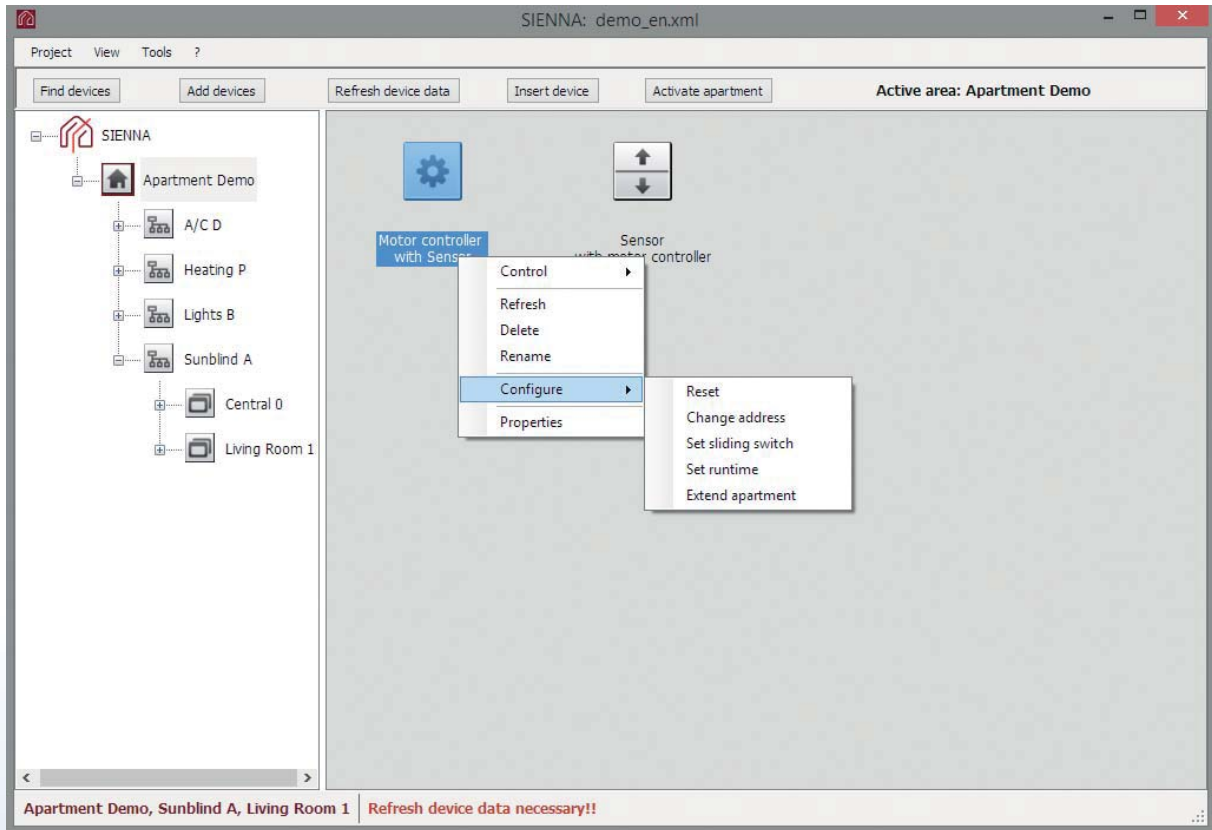
- **Rename:** Allows selected group to be renamed.

2.3 Context menu Device group



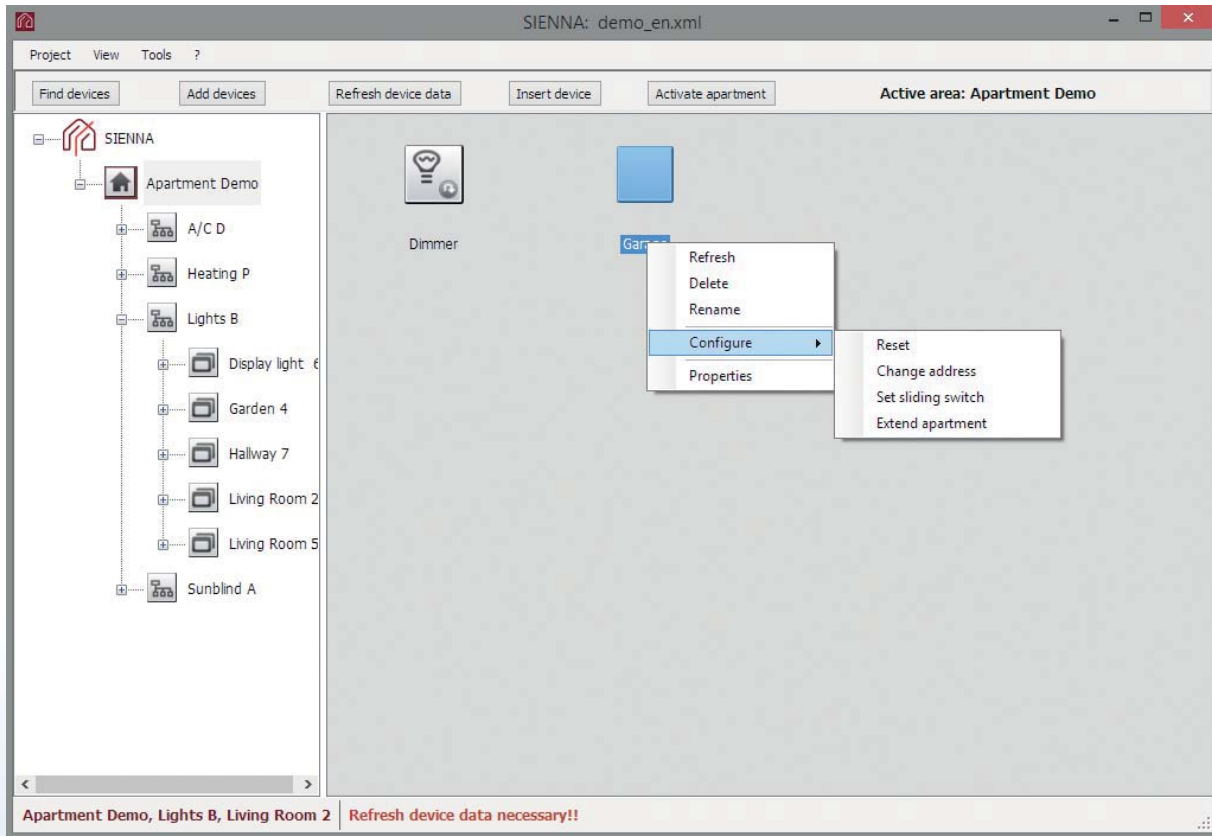
- **Rename:** Allows selected device group to be renamed.

2.4 Context menu Actuator



- **Control:** Enables actuator to be controlled directly from the PC. The corresponding apartment has to be activated.
- **Refresh:** Updates the module data. The corresponding apartment has to be activated.
- **Delete:** Deletes actuator from the current data set.
- **Rename:** Renames actuator.
- **Configure:**
 - **Reset:** Sets the actuator back to its factory settings.
 - **Change address:** Enables device address to be set directly from the PC. The corresponding apartment has to be activated.
 - **Set sliding switch:** Enables slide switch position to be set directly from the PC. Only for actuators with a built-in slide switch. The corresponding apartment has to be activated.
 - **Set runtime:** Enables total runtime of the motor to be set directly from the PC. Only for motor actuators. The corresponding apartment has to be activated.
 - **Dimmer settings:** configuration according to the manual. Only for universal dimmers. The corresponding apartment has to be activated.
 - **Set alarm threshold:** Enables threshold to be set for alarms. Only for actuators with current measurement feature. The corresponding apartment has to be activated.
 - **Create apartment:** Creates a new apartment address for the PL modules. Only for actuators in the unconfigured state and from firmware version 8.0.
 - **Extend apartment:** Includes new (unconfigured) PL modules in an existing apartment. Only for actuators in the configured state and from firmware version 8.0. The corresponding apartment has to be activated.
- **Properties:** Displays all actuator parameters.

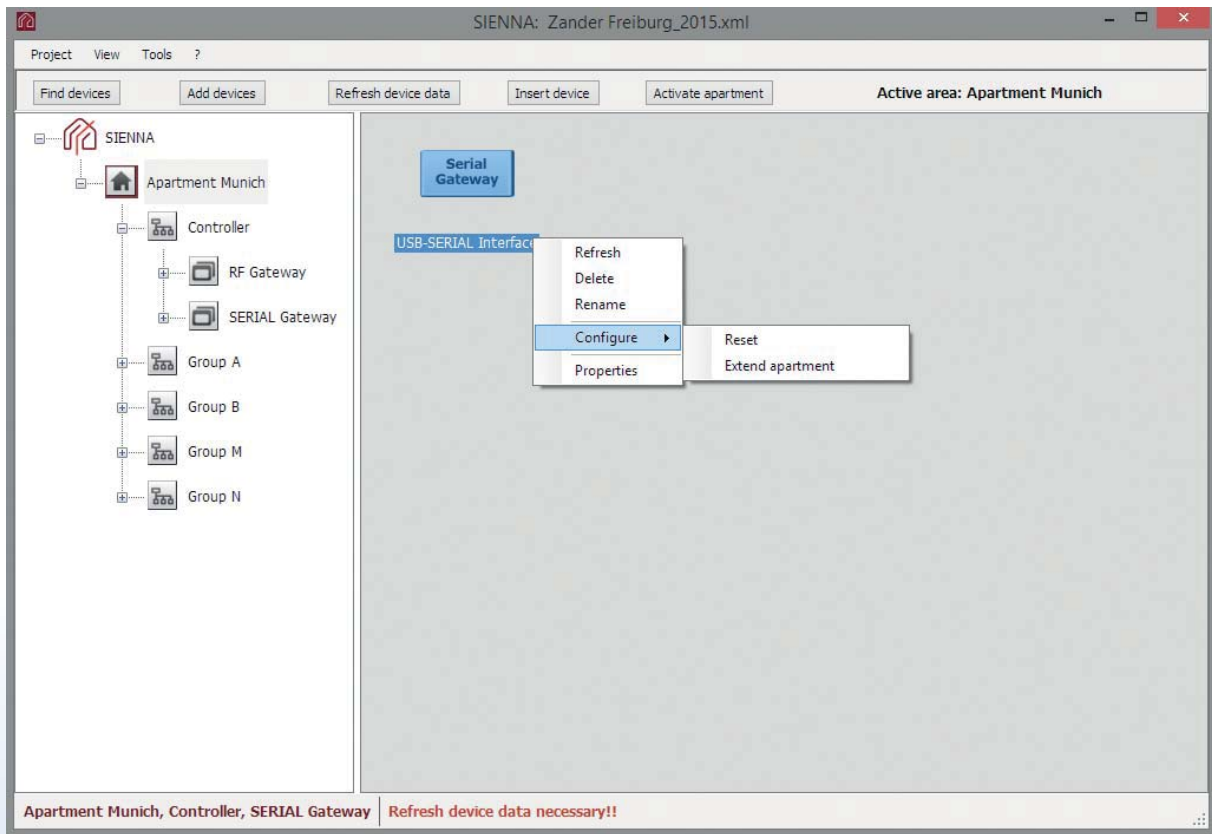
2.5 Context menu Sensor



- **Refresh:** Updates the module data. The corresponding apartment has to be activated.
- **Set temperature:** Enables the temperature set point to be adjusted directly from the PC. Only for modules with temperature sensors. The corresponding apartment has to be activated.
- **Delete:** Deletes sensor from the current data set.
- **Rename:** Renames sensor.
- **Configure:**
 - **Reset:** Sets the sensor back to the factory settings.
 - **Set timer:** Enables the timer runtime to be set directly from the PC. Only for sensors with timer functionality. The corresponding apartment has to be activated.
 - **Set temperature offset:** Enables the calibration of the measured temperature. Only for modules with temperature sensors. The corresponding apartment has to be activated.
 - **Thermostat calibration:** allows the calibration of the potentiometer. Only for modules with temperature sensor (without display). The corresponding apartment has to be activated.
 - **Change address:** Enables the device address to be set directly from the PC. The corresponding apartment has to be activated.
 - **Set sliding switch:** Enables the slide switch position to be set directly from the PC. Only for sensors with a built-in slide switch. The corresponding apartment has to be activated.
 - **Delete channel:** Deletes the channel assignment. Only for SM8 devices. The corresponding apartment has to be activated.
 - **Create apartment:** Creates a new apartment address for the PL modules. Only for sensors in the unconfigured state.
 - **Extend apartment:** Includes new (unconfigured) PL modules in an existing apartment. Only for sensors in the configured state. The corresponding apartment has to be activated.
- **Properties:** Displays sensor parameters.

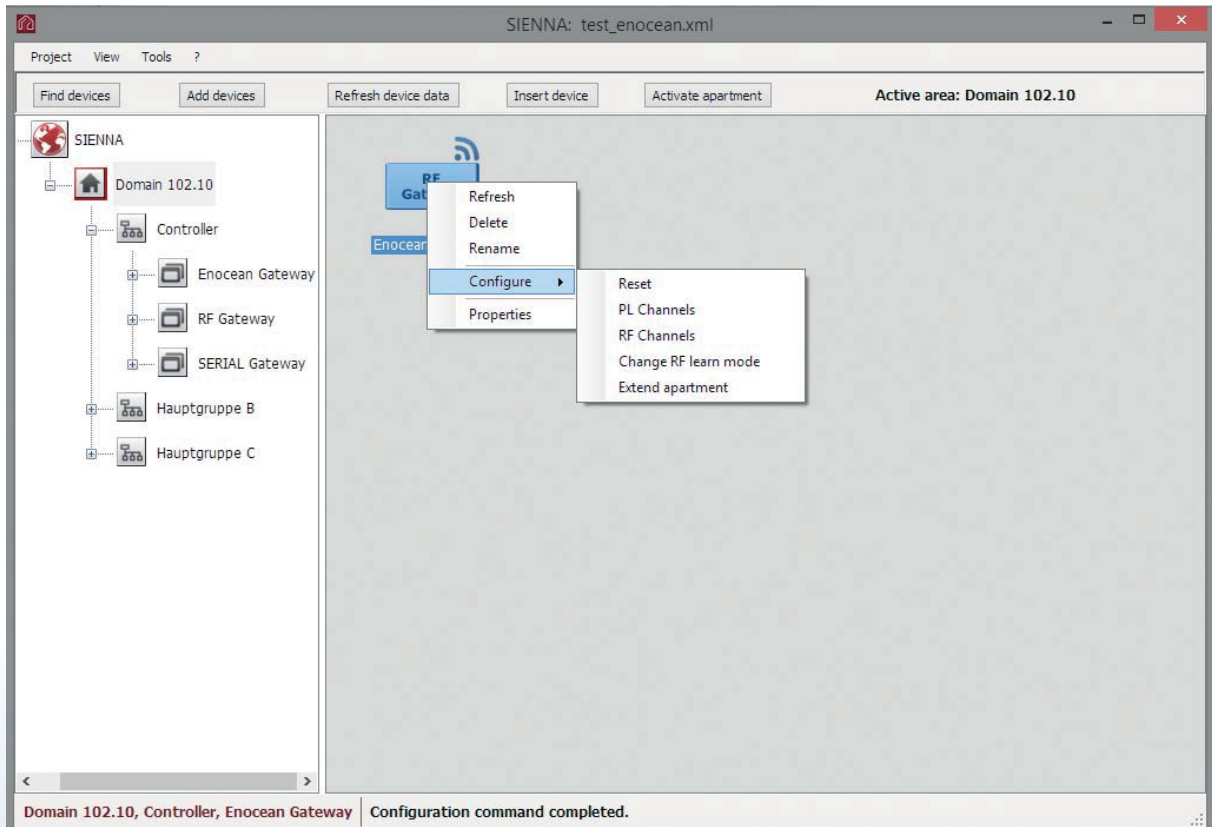
2.6 Context menu Serial gateway (FPLG14)

This context menu is only visible in the installer mode.



- **Refresh:** Updates the module data. The corresponding apartment has to be activated.
- **Delete:** Deletes the gateway from the current data set.
- **Rename:** Renames device.
- **Configure:**
 - **Reset:** Sets the gateway back to the factory settings.
 - **Create apartment:** Creates a new apartment address for the PL modules. Only for gateways in the unconfigured state.
 - **Extend apartment:** Includes new (unconfigured) PL modules in an existing apartment. Only for gateways in the configured state. The corresponding apartment has to be activated.
- **Properties:** Displays all device parameters.

2.7 Context menu Enocean gateway

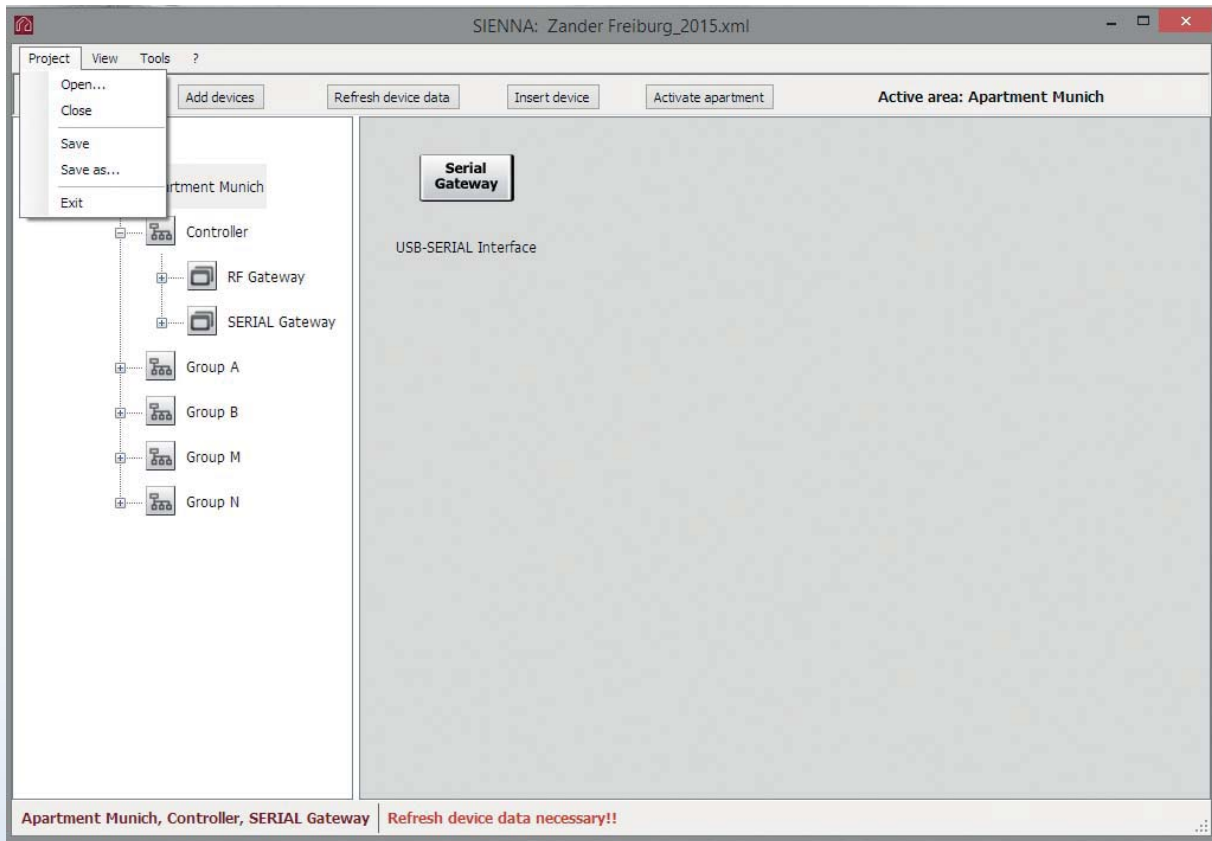


- **Refresh:** Updates the module data. The corresponding apartment has to be activated.
- **Delete:** Deletes the gateway from the current data set.
- **Rename:** Renames device.
- **Configure:**
 - **Reset:** set back the factory settings of the gateway.
 - **PL channel:** translates commands from PL sensors or feedback telegram from PL actuators into wireless telegrams.
 - **RF channel:** allocates wireless channel on PL actuator or PL address.
 - **Change RF teach mode:** activate or deactivate the value teaching mode of the gateway (dimming value, motor position).
 - **Create apartment:** Creates a new apartment address for the PL modules. Only for gateways in the unconfigured state.
 - **Extend apartment:** Includes new (unconfigured) PL modules in an existing apartment. Only for gateways in the configured state. The corresponding apartment has to be activated.
- **Properties:** Displays all device parameters.

3. Menu items

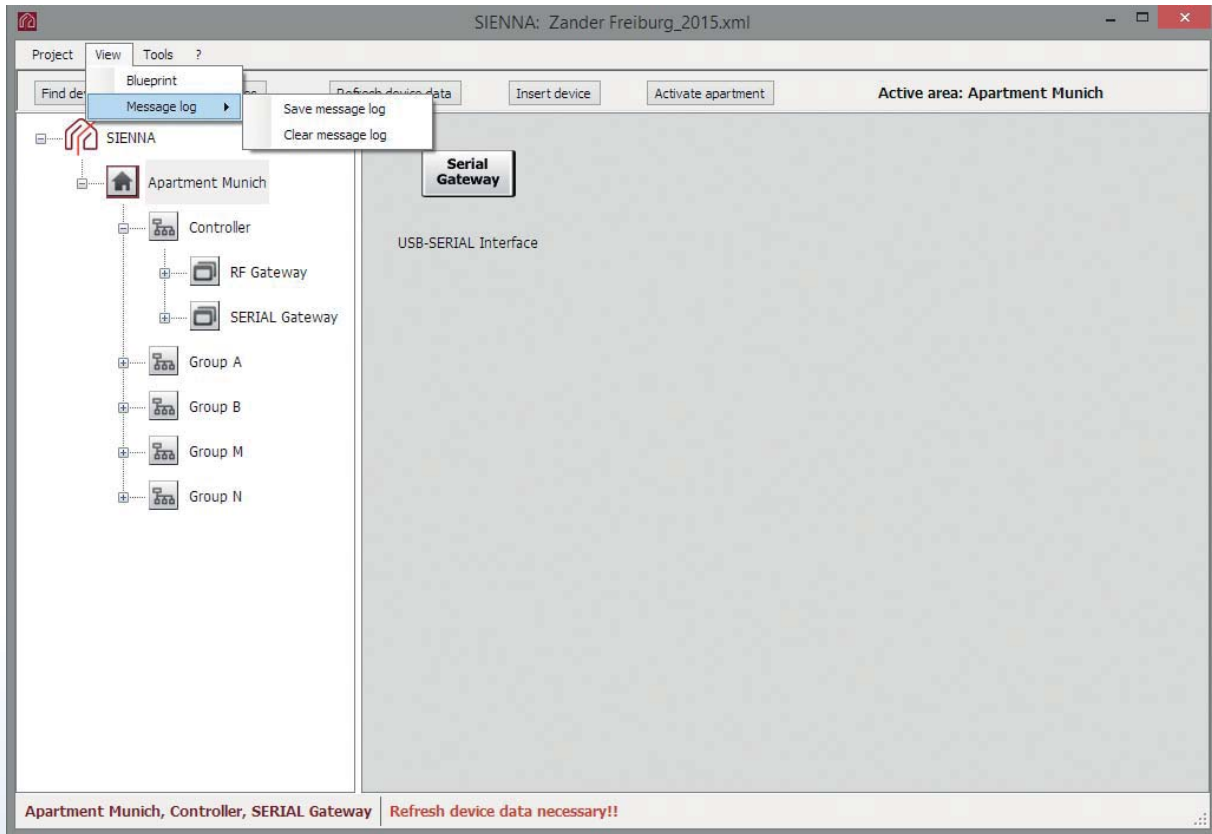
3.1 Menu item Project

Open / Close / Save project files.



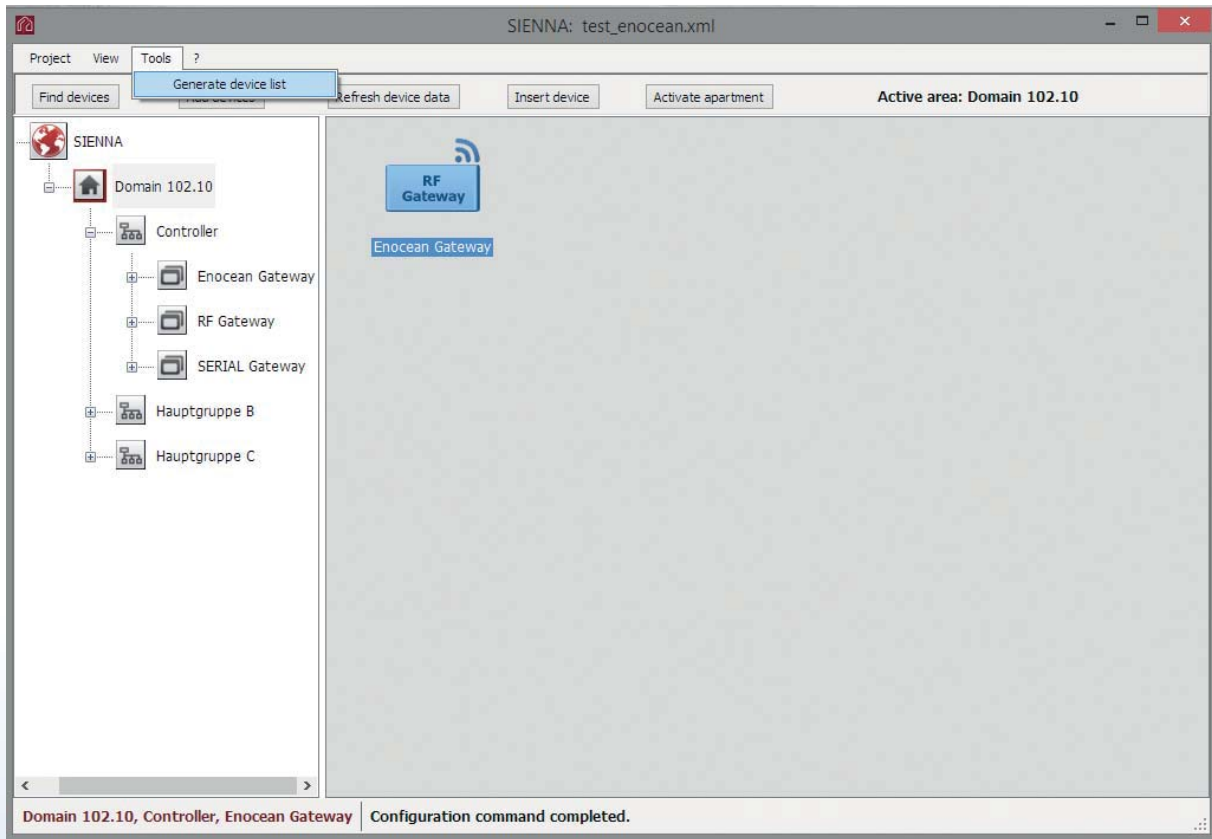
- **Open:** Opens a previously saved project file.
- **Close:** Closes the current project file.
- **Save:** The currently displayed data set is saved in a file (XML format).
- **Save as:** The currently displayed data set is saved in a file (XML format).
- **Exit:** Exits program.

3.2 Menu item View



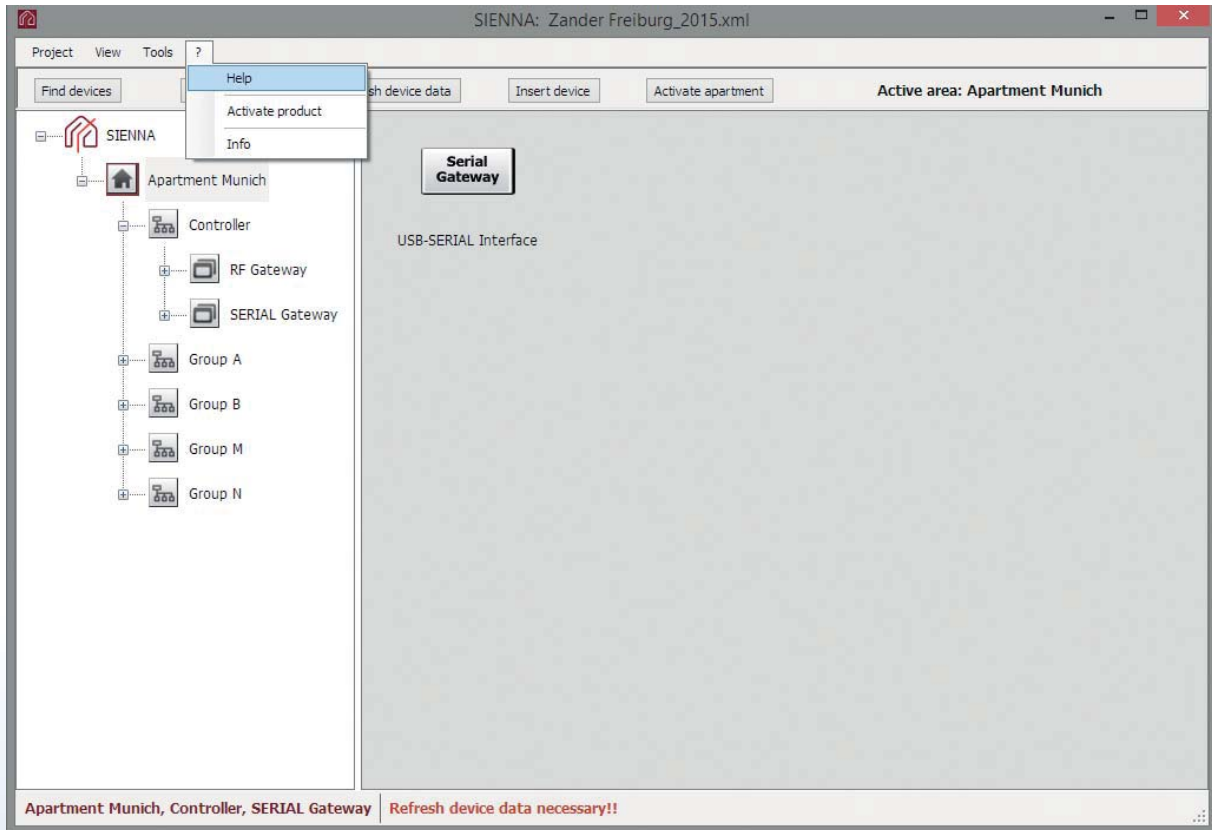
- **Blueprint:** Spatial view of the PL modules.
 - a) **Menu item File:**
 - Load blueprint: Reads in a blueprint in JPG or GIF format.
 - Default blueprint: Reads in the default blueprint data.
 - Print screen: Prints data on the screen.
 - b) **Commands:**
 - Refresh device data: Updates module data.
 - Position devices: Enables available PL modules to be positioned on the blueprint. The control functions are deactivated in this mode.
- **Message log:** Enables monitoring of messages on the power line network.
 - Save message log: Saves displayed messages in a file.
 - Clear message log: Clears displayed messages.

3.3 Menu item Tools

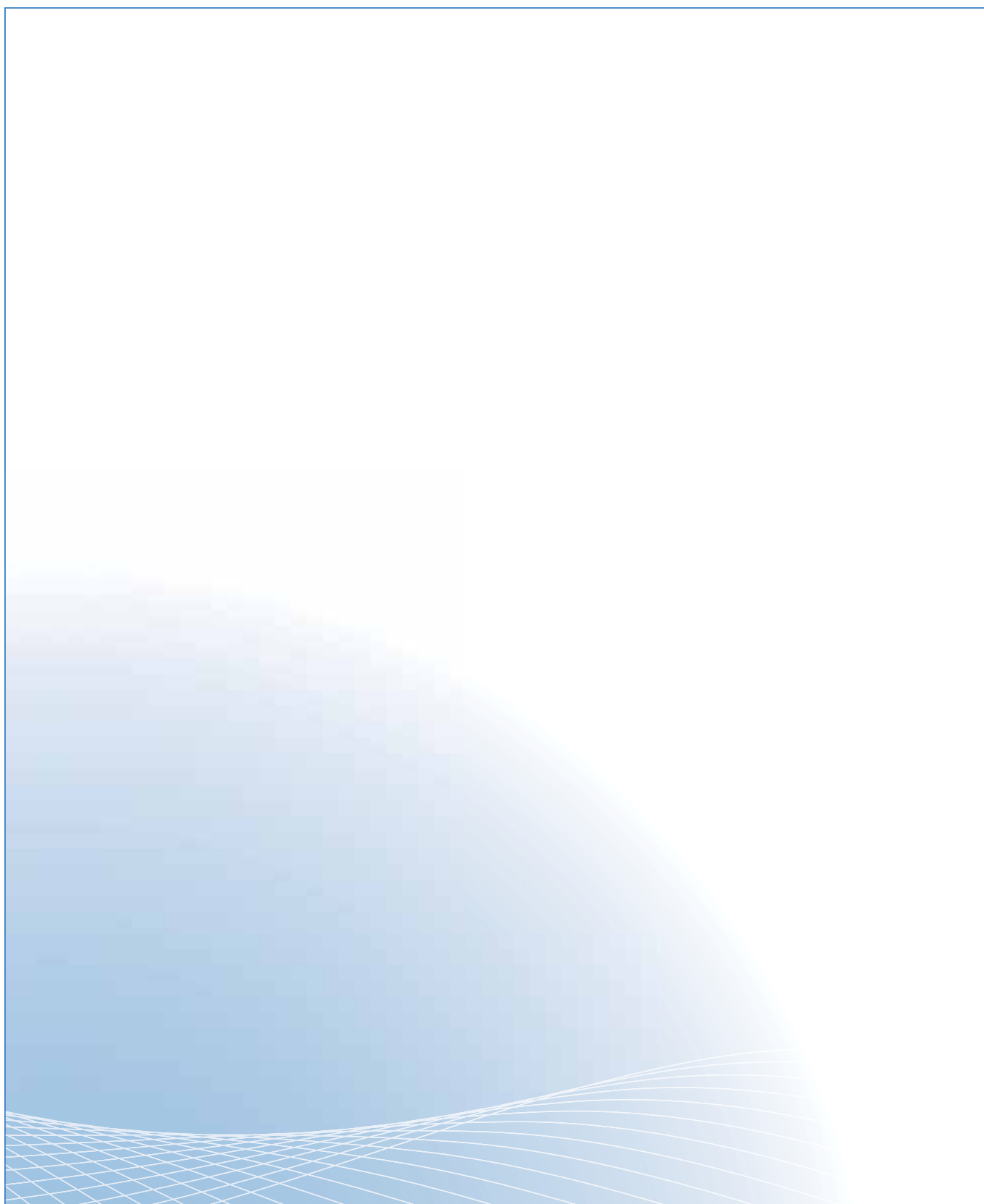


- **Generate device list:** Creates a file containing a list of all available modules.

3.4 Menu item '?'



- **Help:** Opens the help file in PDF format.
- **Activate product:** Used to activate a trial version. The license key is associated with a single network interface. If the network interface is changed then the new licence key can be entered via this menu item. Please note that you have to run the program as Administrator to be able to activate the trial version. In Windows 7 being logged in as an Administrator is not sufficient — you need to run the program as Administrator.
- **Info:** Information about SIENNA® Professional.



Must be kept for later use!

Eltako GmbH

D-70736 Fellbach
+49 711 94350000
eltako.com

Technical Support English:

☎ Michael Thünte +49 176 13582514
☎ Marc Peter +49 173 3180368

✉ thunte@eltako.de
✉ marc.peter@eltako.de