

Multifunction time relay
MFZ12NP-230V+UC


Only skilled electricians may install this electrical equipment otherwise there is the risk of fire or electric shock!

Temperature at mounting location:

-20°C up to +50°C.

Storage temperature: -25°C up to +70°C.

Relative humidity:

annual average value <75%.

1 NO contact not potential free

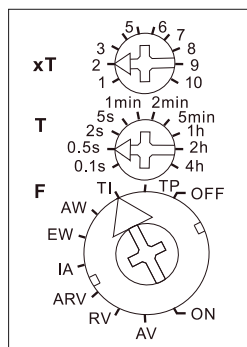
16A/250V AC. Incandescent lamps 2300W*. Standby loss 0.5 watt only.

Zero passage switching.

230V control voltage and additionally 8 to 230V UC electrically isolated universal control voltage. 230V supply voltage and switching voltage.

Time settings between 0.1 seconds and 40 hours.

* The maximum load can be used starting at a delay time or clock cycle of 5 minutes. The maximum load will be reduced for shorter times as follows: up to 2 seconds 15%, up to 2 minutes 30%, up to 5 minutes 60%.

Function rotary switches

Functions F

RV = release delay

AV = operate delay

TI = clock generator starting with impulse

TP = clock generator starting with pause

IA = impulse-controlled operate delay

EW = fleeting NO contact

AW = fleeting NC contact

ARV = operate and release delay

ON = permanent ON

OFF = permanent OFF

The LED below the upper function rotary switch informs about the position of the contact during the countdown. It blinks while the contact is open and stays on as long as the contact is closed.

The time base T is selected by means of the middle, latching rotary switch **T**.

Time-base figures available are

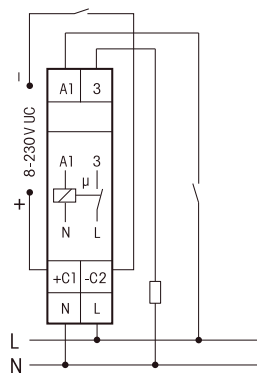
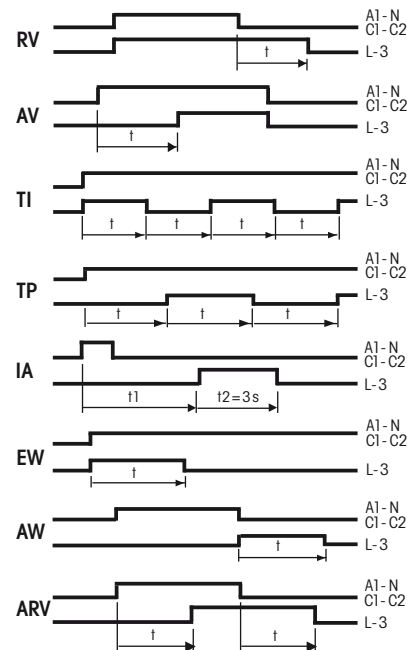
0.1 seconds, 0.5 seconds, 2 seconds,

5 seconds, 1 minute, 2 minutes,

5 minutes, 1 hour, 2 hours and 4 hours.

The total time is obtained by multiplying the time base by the multiplier.

The multiplier xT is set on the upper, latching rotary switch **xT** and is in the range from 1 to 10. Thus, time settings can be selected in the range from 0.1 second (time base 0.1 second and multiplier 1) and 40 hours (time base 4 hours and multiplier 10).

Typical connection

Description of functions


The strain relief clamps of the terminals must be closed, that means the screws must be tightened for testing the function of the device. The terminals are open ex works.

Must be kept for later use!

We recommend the housing for operating instructions GBA12.

Eltako GmbH

D-70736 Fellbach

+49 711 94350000

www.eltako.com