

Analogue settable multifunction time relay MFZ61NP-UC

1 NO contact not potential free 10 A/250 V AC.
Incandescent lamps 2000 W*.
Standby loss 0.7 watt only.

Built-in device for installation and surface mounting. 45 mm long, 55 mm wide, 18 mm deep.

Zero passage switching to protect contacts and lamps. This prolongs in particular the lifetime of energy saving lamps.

State-of-the-art hybrid technology combines advantages of nonwearing electronic control with high capacity of special relays.

By using a bistable relay coil power loss and heating is avoided even in the on mode. The switched consumer may not be connected to the mains before the short automatic synchronisation after installation has terminated.

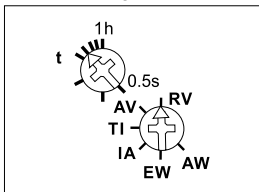
Universal control voltage input 8 to 230V UC, electrically isolated from the 230V supply voltage and switching voltage.

Very low switching noise.

Time settings between 0.5 seconds and 1 hour.

* The maximum load can be used from a delay time or clock cycle of 5 minutes. The maximum load is reduced for shorter times as follows: up to 2 seconds to 15%, up to 2 minutes to 30%, up to 5 minutes to 60%.

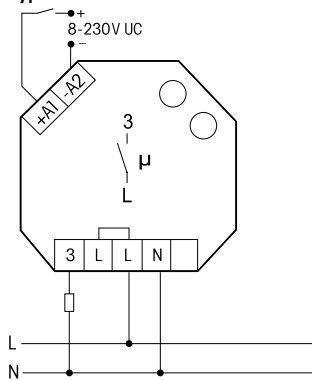
Function rotary switches



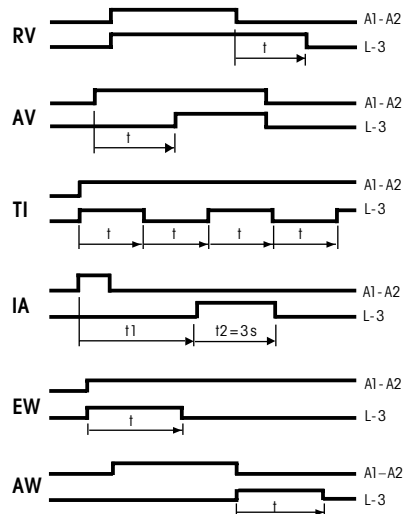
Functions F

- RV** = off-delay
- AV** = operating delay
- TI** = clock generator starting with impulse
- IA** = impulse-controlled operating delay
- EW** = fleeting NO contact
- AW** = fleeting NC contact

Typical connection



Description of functions



Warning!

Only a trained electrician may install this equipment, otherwise there is a risk of fire or electric shock.